



## THE PREMIER ENTEGRA DIESEL COACH OWNERS ASSOCIATION

*Rollin' Along*

July 2019

### Featuring:

- Upcoming Events
- Technical Hints and Information
- Member Stories
- Recipes for the Coach Life
- Regional Activity
- And more

## Content

Presidents Corner .....	1
From the Editors Desk .....	2
Technical Hints and Information .....	2
Member Stories.....	6
Recipes for the Coach Life.....	8
Regional Activities .....	9
Destinations .....	13
What's New in Coaches .....	13
Entegra Service Highlights .....	14
Secretary.....	14
Treasurer.....	14
Membership.....	15
FMCA International Area .....	18
Links of Interest.....	18

## Contact Information for Your ECOA Officers

- President – Wm. Patrick (Pat) Bauer  
E-Mail: [wmpbauer@verizon.net](mailto:wmpbauer@verizon.net)
- Secretary – Medarda Bauer  
E-Mail: [wmpbauer@verizon.net](mailto:wmpbauer@verizon.net)
- Treasurer – Mario LaCute  
E-Mail: [mlacute1@yahoo.com](mailto:mlacute1@yahoo.com)
- National Director – Terry Walker  
E-Mail: [twwalk@aol.com](mailto:twwalk@aol.com)
- Alt National Director – Wayne Baumann  
E-Mail: [wbauma@aol.com](mailto:wbauma@aol.com)
- Vice President – Tom Crowley  
E-Mail: [crowleytj@gmail.com](mailto:crowleytj@gmail.com)
- Vice President – Gary Jones  
E-Mail: [gary.jones@LSUS.edu](mailto:gary.jones@LSUS.edu)
- Vice President – Linda Hanson  
E-Mail: [leelou07@icloud.com](mailto:leelou07@icloud.com)
- Vice President – Tommy Townsend  
E-Mail: [bttowns@sbcglobal.net](mailto:bttowns@sbcglobal.net)
- Vice President – Raymond Wenig  
E-Mail: [rpwenig@gmail.com](mailto:rpwenig@gmail.com)

## Entegra Coach Owners Association (ECOA) Newsletter "Rollin' Along"

Volume 3 Issue 1, July 2019  
Produced by: Dana Sawyer  
[dana.sawyer350@gmail.com](mailto:dana.sawyer350@gmail.com)

## Presidents Corner

### The Best Laid Plans

It comes as no surprise that you can never perfectly predict the twists and turns your road may take. Sometimes those twists actually take you in positive new directions. Sometimes opportunities pop up that could not be seen prior to that change in direction. Or not! The point is we cannot actually predict perfectly or otherwise.

Earlier this year, I announced, with my wife's blessings, plans to retire from ECOA leadership at the end of the year. We felt that perhaps our ideas and successes might benefit from new blood. But then at Homecoming, members were coming up, thanking me for my service, and frankly, we were overwhelmed with people asking me to reconsider.

So, we took a couple of weeks and did just that. The outcome is that another two years is, I feel, the appropriate step. The Executive Board made some organizational recommendations that are published elsewhere in this newsletter (**see Membership Section**), that will distribute some of the work that I have done most of the last six years amongst several of the chapter officers. I hope you will carefully look at the Organizational Chart and our Revised List of Job Descriptions, and support those changes to our Bylaws. I strongly feel that these changes will give us the best opportunity to build continuity in leadership going forward. Entegra Coach has been informed of this decision.

Thank you all for your support and the many who have had a hand in this decision. I promise to do all I can to sustain this club and the social web, the networking, and the fellowship we have all enjoyed.

## From the Editors Desk

**"A day is a span of time no one is wealthy enough to waste".** Saying from a recent chinese fortune cookie.

Perhaps some of you have travelled as we have, at times stopping just for a night before quickly moving on to reach a final destination, never searching out local spots of interest. Paducah, KY has been one of our overnight only spots that we finally decided to stop and smell the roses at.

In Paducah, for many the big draw is the Quilt museum which is phenomenal. We also took time to visit the Purple Toad Winery, the floodwall murals along the Ohio river and while we were there saw the Queen of the Mississippi paddlewheeler which had docked. Food is always on our list of things to do so we had lunch at Kirchoff's Bakery and Deli.

As we have learned, for every place we visit someone we meet tells us about several we missed so perhaps next time it will be Moonshine Company, Railroad Museum and Parker's Drive And Catering Co. During your travels make sure you take time to smell the roses and never waste a day

As always remember that any products presented here are provided as information for you and not endorsed by the ECOA or its officers.

## Technical Hints and Information

### MUST HAVE APPs - Available from Your APP Store



ENTEGRA COACH - Quick access to manuals, service locations, events and more



SPARTAN CONNECTED CARE - Access to maintenance schedules, diagnostic codes, key contacts and more



iRV2 - RV Forum

IRV2 - RV FORUM - Supporting thoughtful exchange of knowledge, values, and experience among RV enthusiasts (select owners forum then Entegra)

COACHNET -  
ALLSTAYS -  
TRUCKER PATH -

### Entegra University

**By Joyce Skinner Director, Customer Experience, Jayco Motorhome Group**

Many of you have heard about our Entegra University and have asked what it is. This is a 4-day class that offers an exclusive opportunity to understand key components and functions built into your coach. Our instructor, PJ Clanton, offers further in-depth knowledge of your coach so that you have a better understanding of its operation. We are a firm believer that the more you know, the better this lifestyle experience will be.

Class dates are released to owners toward the end of every year - usually in November. Registration for classes will be open prior to close of the year and will be available at [entegracoach.com](http://entegracoach.com) under our event locator. Please be sure to watch for this news as the classes fill up quickly and we have limited space for each one. If you would like more information, please contact Jordan Nisley or PJ Clanton at 800-517-9137, option #2.

**SORRY for what I said while we were parking the COACH**

## Windshield Wipers

By Phillip Clanton (PJ), Motorized  
Technical Training Manager

### Wiper Arm Installation

- The Curb side wiper arm should be installed with the blade parallel with the bottom of the windshield. Tighten the nut that holds the arm to the pivot shaft and torque to 60ft. lbs. Do not operate the system at this point. Wait approximately 2 hours and re-torque to 60 ft. lbs.
- The Driver's side arm should be parked in the position where the outer tip of the wiper blade will be setting approximately 1"-1.5" above horizontal. Tighten the nut that holds the arm to the pivot shaft and torque to 60ft. lbs. Do not operate the system at this point. Wait approximately 2 hours and re-torque to 60 ft. lbs.

In the event, you have loose arms, you may need to retighten to torque specifications. Follow this tip before installing new arms or torqueing existing arms.

The pivot shaft splines may be "Loaded" with material from the wiper arms. The pivot shafts are made of hardened steel and are not stripped, simply loaded with the soft material from the wiper arm head. The splines on the pivot shaft can be cleaned using a utility knife or wire brush before the install or torque of the arms.

## NHTSA Recalls (6/24/19)

By RVBusiness

The following is the most recent Entegra RV recalls by the National Highway Traffic Safety Association:

Entegra Coach is recalling 88 2020 Anthem and Cornerstone motorhomes. The steering shaft bolt may have been insufficiently tightened.

## Cleaning the Dishwasher

By Dana Sawyer

It is a dirty job and I end up doing it. Actually, my dear wife does many things for me so this just helps balance the account but please do not tell her that.

First, I should say that the instructions for cleaning the Fisher & Paykel dish washer draw are available in the suitcase of documents that you received. The documentation states that cleaning should be done when finding food particles in the drain filter, the spray arm may need cleaning once a month, and the filter plate can be wiped off with a clean cloth.

Second, as RVers the frequencies probably do not make any sense because of either infrequent use or excessive hard water we encounter. We find that the hard water means more frequent cleanings and removing the filter plate to clean underneath with every cleaning.

Now to the cleaning bit:

- Lift out the plastic grid and basket by lifting it from the back first to avoid the detergent and rinse aid dispenser on the front wall
- Lift out the spray arm
- Lift and remove the drain filter
- Turn the filter plate locking ring counter clockwise about one inch then lift out the filter plate (make sure to keep track of the O-ring underneath)



There is a long list of cleansers not to be used. I use white vinegar and an old dish cloth starting with:

- Wipe down the tub making sure that all the loose bits and hardwater mineral build up are removed
- Carefully clean the O-ring making sure not to stretch it
- Wipe down the filter plate paying special attention to the gasket on the outer edge
- Clean the drain filter (this may require a combination of soaking, brushing the screen with a small brush, and spraying the screen)



- Clean the spray arm making sure to get all loose particles out of the inside

Now reassemble all the parts and run a rinse cycle to make sure that any cleaning chemical residue is removed. The dish washer should now look brand new.



## HydroSilex Recharge

### Product Recommended By Glen Carruth

Hello Entegra Coach Owners Association, this is Neal Cavanaugh, CEO of Hydrosilex USA. I had the opportunity to speak with your President, Pat the other day and he had asked me to speak to you all about Class A Motor coach detailing and the Hydrosilex product line. We are a small manufacturer and distributor of a Nano ceramic top coat, Recharge and Marine, located in Lancaster, PA. Our product is not a wax or polish, it is silica dioxide based (Sio2) and can be easily applied to any smooth, non-porous surface. Taking care of your motor coach is a big job and Hydrosilex makes that task much easier than applying typical waxes or polishes. Owning a motor coach is a big investment too, so you are going to want take care of that investment. Let's face it, these coaches are exposed to multiple environments, weather, and road conditions (dirt, gravel, clay), Hydrosilex Recharge offers great protection from oxidation, UV damage, salt, etc. All the while giving you a shine and gloss that is second to none and puts some pride in your ride! Ease of application is another big plus from what must seem a daunting task at times, typically it takes me about 15 min to put a layer of Hydrosilex Recharge on my Subaru Outback, I typically use about 4-5 ounces per application. Each application has a lifespan of 6-8 months, I do a coat once a season. Simply work in about a 3 ft section at a time, spray on the Recharge, level with a clean microfiber towel, then lightly buff to shine with a second clean microfiber cloth. The surface of the vehicle should be clean before applying and not applied in direct sunlight. I would like to invite you all to visit our website, [www.hydrosilex.com](http://www.hydrosilex.com) to check out our full product line, watch some cool videos and pics. We also sell foam cannons and are launching a garden hose foam gun soon, both of which are great for having fun while cleaning larger vehicles. Below, is the

Coupon with the "ENTEGRA15" coupon code to obtain 15% off orders over \$70.00.

**Summary**

**ENTEGRA15** Scheduled

- 15% off entire order
- Minimum purchase of \$70.00
- For everyone
- One use per customer
- Active from Jul 1 to Aug 10

**PERFORMANCE**

Discount is not active yet.

## Towing Breakaway By Dana Sawyer

Are you connecting your towed vehicle/trailer breakaway cable correctly? During a recent towing class some important items were highlighted:

- Make sure to test the breakaway switch operation on a regular bases by pulling the plug. The plug could become stuck due to road grime. WD40 can be used sparingly to reduce friction
- Make sure the breakaway cable is connected to a point on the coach that is not part of the receiver assembly. If the receiver assembly detaches the breakaway would not activate
- Make sure the breakaway cable is not wrapped or caught on anything that would stop its proper operation

WHEN the breakaway switch should operate is a more complex question and directly influences how you connect the breakaway cable.

Federal Motor Carrier Safety Administration (FMSCA) Regulations published in the Federal Register and compiled in the U.S. Code of Federal Regulations (CFR) require two separate safety systems:

- Safety devices to prevent the towed vehicle from breaking loose in the event the tow-bar fails or becomes disconnected (Part 393, Section 70 Paragraph d)
- Every trailer required to be equipped with brakes shall have brakes which apply automatically and immediately upon breakaway from the towing vehicle (Part 393, Section 43 Paragraph d)

During the class, in a scenario posed by the classroom instructor, the breakaway cable is longer than the safety cables and if the tow bar fails, you have a trailer/vehicle that is still attached to the coach and may or may not brake when you try to stop potentially resulting in collision with and high dollar damage to the coach. The trailer/vehicle attached only by safety cables may swing from side to side damaging anything within reach. However, if the breakaway cable had been shorter than the safety cables and activated the braking system earlier, the only damage would be four flat spotted tires.



Safety cable and breakaway cable attached to receiver loop. Demonstrates maximum attachment length of cables.

When I posed this scenario to DEMCO, makers of the Air Force One supplemental braking system, they responded; *"In a breakaway situation it would be much safer that the breakaway not be engaged until a complete detach has happened. You could have a situation that a tow bar would malfunction and just have the safety cables connected. If the breakaway circuit would be activated at this point, the driver could be unaware that his vehicle is braking, and if this would go on for some time it could cause more damage to either the towed vehicle or the motor coach"*.

Given that there are opposing views I cannot say with any certainty which is correct, nor do the regulations specifically define any interaction of the two safety systems. The regulations do seem to indicate the purpose of safety chains/cables is to prevent breakaway and the purpose of the breakaway systems is to stop the trailer if it should breakaway. The final decision must be yours, but at the very least **make sure you verify the operation of your breakaway system and be aware of what is happening with your toad/trailer.**

## Member Stories

### Do you have a story to share?

Did you post an interesting bit on Facebook? Did you make a discovery or have an adventure? Do you volunteer for an organization? Good or bad, happy, or sad, exhilarating, or frustrating, your story may help or inspire others. Submit your information and photos to the Editor at:

[dana.sawyer350@gmail.com](mailto:dana.sawyer350@gmail.com)

### RVing with Dogs in Summer

By Wayne Baumann

The season for a few extra precautions to keep your pets cool. Traveling with a pet most often in the summer is time to pay special attention to hot weather and how it can hurt, even kill our best

friends. Increased outdoor temperature is a contributing factor to heatstroke, but is an avoidable condition. An animal develops heatstroke when its body temperature rises to a dangerous point (often it is over 106 degrees Fahrenheit), that will damage cell health and normal functions. Heatstroke often occurs during the first warm spell of spring, when a pet is not accustomed to activity in warmer temperatures. Dogs at greatest risk are those that are older, overweight, and brachycephalic (with a short nose). Also, at risk are pets unattended in a parked vehicle, which can reach dangerously high temperatures very quickly on a warm day. RVers should never leave their dog or other pets alone during hot weather without a highly dependable air conditioning system. Camping where the RV is shaded from the afternoon sun is also a good preventive measure. The best way to avoid heatstroke is to slowly reintroduce activity to your pet, while ensuring it has breaks for drinking plenty of water off in a pool or safe body of water. If you suspect your pet is overheated with a sign of weakness, increased respiratory effort or rate, excessive panting (or not panting at all), or even vomiting, stop the activity. Cool your pet by soaking its coat down to the skin and then see a veterinarian as soon as possible. Drive with the air conditioning on, or if your pet is secured and away from the windows, have the windows down to encourage evaporative cooling. Always know the location of the closest emergency clinic, even when possible in your travels. This advice applies to cats as well.

### Double Your Air Pressure By Dana Sawyer

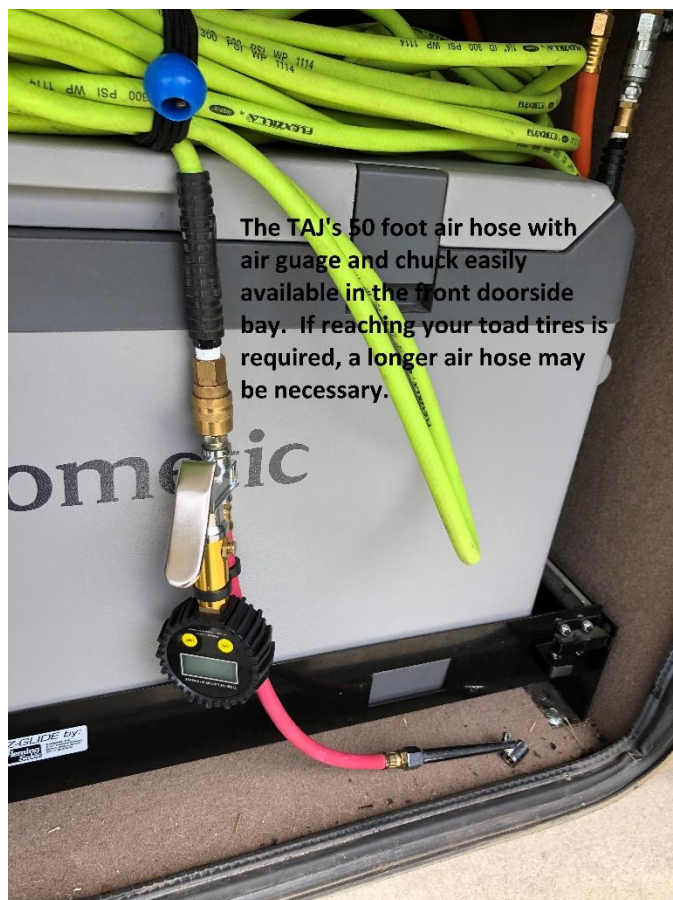
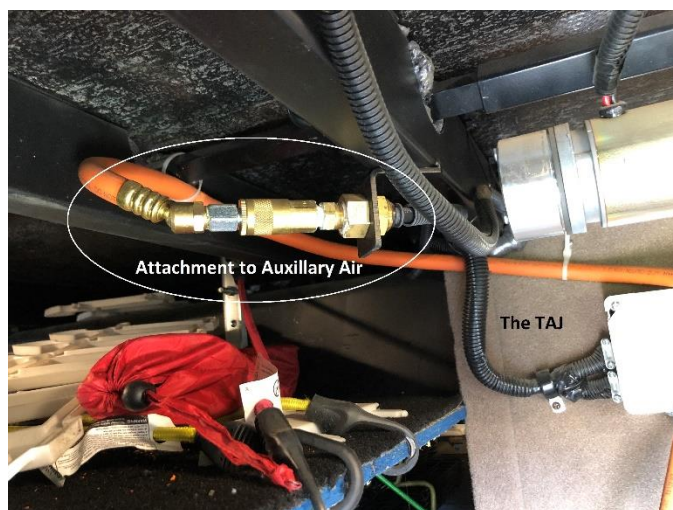
The problem for most of us is that the onboard air system does not provide enough air pressure to inflate the front tires using the auxiliary air port. Solutions are:

- Ignore the tire pressure and risk premature tire failure

# Rollin' Along

Official Publication of the Entegra Coach Owners Association

- Drive to a place that has high pressure air available and guess how much air should be added because the tires are no longer cold
- Purchase a high-pressure air system to carry in the coach taking up valuable space
- Install a booster regulator that will double the input air pressure



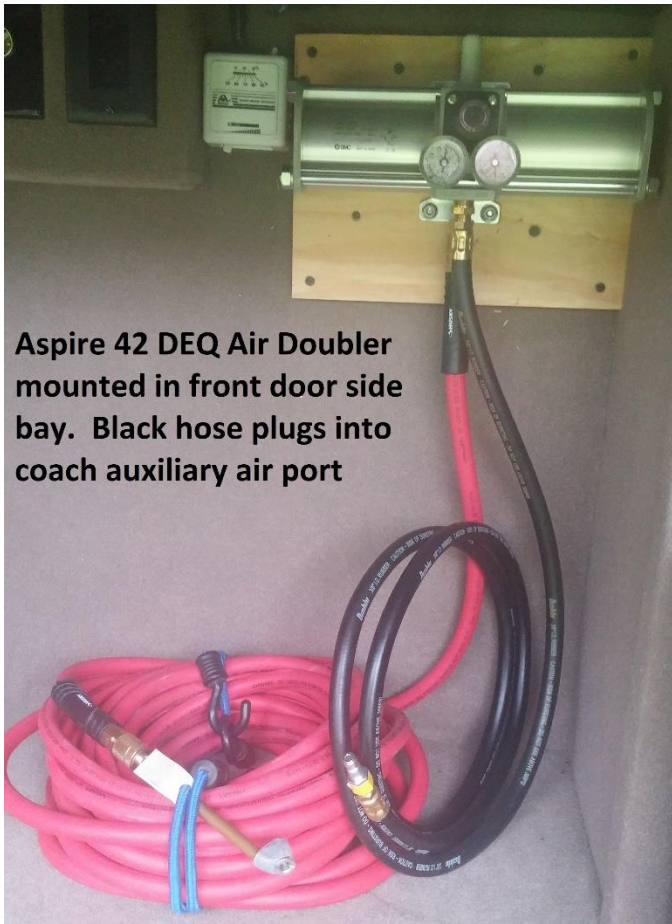
This story starts out like the song “heard it from a friend who heard it from a friend who”. While at Spartan’s Entegra Partner Training in 2018 owners of THE TAJ Rick and Kathleen Amirault shared with us their plan to install a booster regulator commonly known as an air doubler. Now, a year later, we have each installed an SMC Pneumatics ([www.smcpneumatics.com](http://www.smcpneumatics.com)) Air Booster Regulator and are happy with the results. Using a 50-foot air hose we can easily reach and inflate all coach tires to the proper PSI before leaving any campsite.

SMC Pneumatics makes three different model air doublers, each with a different Standard Liters Per Minute (SLPM) air flow (230, 1000, and 1900) and a different port size (1/4, 3/8, and 1/2). All are completely mechanical and do not require any electrical input.

Installation is reasonably simple and all the required install parts are available at big box hardware stores. Based on the model you select, the air hose, coupler and plug should be similarly sized.

Defining where you will mount the air doubler will dictate the length of hoses needed. One hose runs from the coaches auxiliary air port to the air doubler and the second runs from the air doubler to the tires to be inflated. When selecting coupler and plug fittings (industrial or automotive) make sure to match the existing couplers and plugs.

The pictures show both our installations with connection points highlighted. You can find threads and additional information about the SMC Booster Regulator on IRV2 ([www.irv2.com](http://www.irv2.com)) and RV TECHMAG ([www.rvtechmag.com](http://www.rvtechmag.com)).



**Aspire 42 DEQ Air Doubler mounted in front door side bay. Black hose plugs into coach auxiliary air port**

member of ECOA is similar. Once you join and go to that first rally, there is something that grows inside you and it is there for a lifetime. Before you know it, you are making new friends, but it feels like you have known them forever. You are finding you have things in common with a total stranger, but they really are not a stranger. You are learning the road is not as lonely as you worried it might be, because someone like you is sharing it too. You also found out there are new places to explore that you never knew existed all because you decided to come to an area that stretched your comfort zone. This year, ECOA has many new rallies scheduled. I challenge you to take a look and take a chance, **if you have never gone to a rally try one this Summer**. We are LIVING EASY! And speaking of easy; here is one of the easiest and tastiest recipes for Summer:

## LEMON-COCONUT SQUARES

- 35 NILLA WAFERS, finely crushed (about 1-1/3 cups)
- 1 cup sugar, divided
- 1/4 cup (1/2 stick) butter, melted
- 1 tsp. grated lemon peel
- 2 eggs
- 1/4 cup lemon juice
- 2 Tbsp. flour
- 1/2 tsp. baking powder
- 1/4 tsp. salt
- 1/3 cup flake coconut

PREHEAT oven to 350 degrees. Mix wafer crumbs, 1/4 cup of the sugar, the butter and lemon peel until well blended. Press firmly into 8" square baking pan. Bake 8 minutes.

BEAT eggs and remaining 3/4 cup sugar in small bowl with wire whisk until thickened and well blended. Add lemon juice, flour, baking powder and salt; mix well. Pour over crust; sprinkle with coconut.

BAKE 25 to 30 minutes or until center is set and top

## Recipes for the Coach Life

### Share A Favorite Recipe

Do you have a favorite recipe that is made for the coach kitchen? We would love to have you share that recipe. Provide the list of ingredients, instructions, and photos. Submit your information and photos to the Editor at: [dana.sawyer350@gmail.com](mailto:dana.sawyer350@gmail.com)

### Lemon Coconut Squares

By Linda Hanson ECOA VP Membership

Ever heard the line "SUMMERTIME WHEN THE LIVING IS EASY"? Once you have heard this classic tune, it is stuck in your head for a lifetime. Being a

is lightly browned. Cool completely. Cover and refrigerate several hours or until chilled before cutting to serve. Store in tightly covered container in refrigerator.

Makes 20 servings, 1" squares



## Regional Activities

### **Spruce Goose Rally** **By Jerry & Chris Carr, Rally Masters**

Greetings fellow Entegra Owners,



Recently Pat Bauer asked me to write a few words about our recent experiences during our ECOA rally the "Spruce Goose" in McMinnville, OR.

My name is Jerry Carr and I have been somewhat active in other clubs serving as Committee Chairperson and Board member of a Country Club located in Seattle and as Regional Director and VP for one of the more active MH Clubs nationally.



# Rollin' Along

Official Publication of the Entegra Coach Owners Association

My wife Chris and I have been motor homing for 30 plus years and just 2 years ago we purchased our 2017 Entegra Anthem.

With our other MH club (we are still active members), we have enjoyed the fellowship that comes along with small regional rallies. Chris and I have participated in hosting some rallies with this club over the years and have made many long-lasting friendships.

After making the purchase of our Anthem, we realized that the Entegra Club did not have a lot of Pacific North West activities (our base is Bellevue, WA). Also, we noticed the club liked to hold larger events like the Home Coming format held in Elkhart. Whereas these rallies provide a wealth of knowledge, they are less conducive to getting to know other members and develop fellowship that we desire. With this in mind, I contacted Pat Bauer with a rally concept centered around the Aviation & Space Museum located in lovely McMinnville.



We wanted to limit the size of the rally to 30 members (15 Coaches) which we felt was sized for the RV park, clubhouse activities and the fellowship intended. With some convincing, Pat agreed that this would be of interest to our EOCA club. The rally filled on the first day of its web posting with a good waitlist.

We started our rally with a welcome social hosted by Beaver Coach Sales and Service from Bend, OR. They even brought over a 2017 Cornerstone for us

to tour. I think there was plenty of interest, and I understand that one of our members drove over to Bend after the rally for a new 2020. That is a Win/Win. We all introduced ourselves and talked about our various experiences and coaches.

Daily activities included a continental breakfast featuring "Amish Crack" which is "Rise'n Roll" Amish Donuts direct from Elkhart and Yogurt and Fresh fruit. We had socials every day that included reviewing the next day's activities and discussing any motorhome issues we might have.

During the 4 days of rally, we enjoyed the Evergreen Aviation & Space Museum which displays several military and civilian aircraft and spacecraft. Most notably, the Hughes H-4



Hercules, popularly known as the Spruce Goose and the SR-71 Blackbird and Saturn Rocket are displayed. We also enjoyed the Air & Space IMAX theater, a catered Bar BQ dinner with all the fixings, a poker Run to downtown McMinnville, Golf and wine tasting at the Willamette Valley tasting room. Finally, we had a dinner at the historic 1857 Joel Palmer House featuring a 4-course dining experience.

Most importantly, we had plenty of "Free Time" socializing and getting to know one another. A small rally with a great venue provides us an opportunity for fun and fellowship. We had many



express interest in keeping in touch, so I think we succeeded in our mission goal of fellowship!

Wishing you all Safe Travel

### **ECOFA Gathering at FMCA Rally Minot ND**

We are pleased to announce the Entegra Coach Owners Association GATHERING at the FMCA International Family Reunion in Minot, North Dakota.

**Wayne Baumann** has agreed to be our Wagonmaster for this gathering...Thank you Wayne!

FMCA FAMILY REUNION AND INTERNATIONAL RV SHOWCASE

August 13-18, 2019

North Dakota State Fairgrounds

To register, please click on the following link:

[www.fmca.com/fmca-minot-2019-learn-more](http://www.fmca.com/fmca-minot-2019-learn-more)

Click on the above link and sign up for the FMCA Rally and **add 30amp Electrical Service** (\$410.00 total EARLYBIRD pricing). ALSO...mark on your registration that you will be joining the Entegra Coach Owners Association CARAVAN, so that you can be parked with us.

NOTE: If you have not yet joined the Family Motor Coach Association, you will need to do so. ECOFA members must also be members of the FMCA.

You will also need to select how you want to handle receiving your credentials....either through the US Mail or hold your documents at Will Call at the fairgrounds.

### **AFTER YOU HAVE COMPLETED THE FMCA RALLY REGISTRATION**

Register with the ECOFA on our website  
[www.entegraowners.com/EVENTS](http://www.entegraowners.com/EVENTS)

so you can get on the CLUB's list for Minot. THERE IS NO COST FOR THIS REGISTRATION, but it is vital

to get your name on our list....otherwise, you won't get the final instructions for arrival and parking.

**IF YOU HAVE ALREADY REGISTERED WITH FMCA**.....please call FMCA at (800) 543-3622, and ask for the Caravan Registration Desk to inform them you should be included with the Entegra Coach Owners Association group.

**Wayne's email is:** [wbauma@aol.com](mailto:wbauma@aol.com) **and Phone is:** (307) 752-9244

### **NOTES:**

On the FMCA form, you will see lots of different electrical options. Our ECOFA Club will all register for 30amp electrical. If you register for any other option, you will not be parked with the group. If you have already registered with FMCA, you can change that by calling the FMCA Office.

We are scheduled to be parked a DAY EARLY....Tuesday, August 13th (the Event starts on Wednesday (no charge for the extra day). You will receive a last-minute email that will detail the arrival location and time so we all meet in the Holding Area for parking together.

Also note the FMCA Event ends on Saturday, August 17th, but we will stay overnight and depart on the 18th.

Wayne will send out a sign for you to Print and Display in your windshield to help the parking crew direct us to the holding area, so be sure to notify him that you have registered for the ECOFA group for the Rally. You will also have some credentials in your packet for this. Occasionally, your packet will contain a different arrival day and/or time. Our Caravan arrival instructions will supersede those instructions as we are all parking together.

FIRST TIME ATTENDEES: Your credentials will state an assigned arrival time. You can ignore that if you are camping with the ECOFA group. Our group instructions supersede the individual arrival instruction.

Travel Safe,

Pat  
Wm. Patrick Bauer, President  
Entegra Coach Owners Association  
1609 Dower Way  
Sun City Center, FL 33573  
(813) 310-5707  
[wmpbauer@verizon.net](mailto:wmpbauer@verizon.net)

## Summertime

**By Tom Crowley ECOA Vice President**

July 4<sup>th</sup> is almost upon us as I write this. Lynn and I are spending the summer in Sturgis, SD at the Sturgis RV Park. This is one of the best maintained parks we have camped at. They are continuing to update the sites with concrete pads. It is approximately a ten-minute walk to town and lots of activities. This past weekend the Camaro club had an event in town. On Wednesday nights they close off the streets and have food trucks and a band. Sturgis is also central to all the great sites in the Black Hills.

Back in the summer of 1963, I worked out in the Black Hills with Boeing Aerospace performing the final test of the Minuteman ICBM's. That year the weather was perfect, and the job was very interesting as we traveled North of the Black Hills performing the tests from the Launch Control Facilities (LCF). The missiles were removed in the early nineties as we and the Soviets began to reduce the number of nuclear weapons. Along with the 150 Missiles removed from South Dakota, there were an addition 350 minuteman missiles removed from Missouri and North Dakota. There is a Minuteman museum east of Rapid City which does a wonderful job of explaining the nuclear weapons during the Cold War. You can also tour D09 Lunch Facility and D01 The Launch Control Facility (LCF), now known as a Missile Alert Facility (MAF). Well worth the time to visit.

While our trip out From Florida was pretty uneventful, the 2014 Spartan chassis has developed a few new issues. The DEF gauge in the

DEF tank has gone bad. Spartan has two coming in so we have paid for one and it will be shipped to us once it arrives at Spartan. Another issue is the hydraulic line to the cooler has loosened up and is leaking. Spartan put the clamp on with the adjustment facing up, making it very difficult to get to in order to replace it.

Our plan is to spend the summer here in Sturgis exploring the Black Hills which are one of the most beautiful places in the states. During Bike Week we will head over to Montana and visit friends. Then back to Sturgis until the end of August.

## Homecoming 2019

**By Dana Sawyer**

Homecoming is an Entegra Coach event held at the Elkhart County Fairgrounds in Goshen, IN. During Homecoming Rally, owners can receive education on the various systems of their coach, have minor issues repaired by factory technicians, talk with Entegra and Jayco management about problems and improvements, and meet with friends both new and previous (because no one in the RV lifestyle has old friends).

I could describe the great Homecoming Academy training classes and how knowledgeable the instructors are, the superior and personal service provided by the factory technicians, the interesting factory tours, the interaction with vendors that is available, the chance to walk through the newest models, or the over the top food and entertainment provided. But what I want to focus on is the friendships that are established and renewed during Entegra events and especially Homecoming.

I have previously written about attending the Spartan Entegra Partners Training and how I was struck by the instant acceptance, comradery, and friendship of the Entegra owners. In the class were 8 couples, different backgrounds, different coaches, different goals, but instantly connected by our desire to learn about our coaches. Just as

quickly, we drove away to pursue our individual dreams.

Although this was the fourth annual Homecoming, it is only our second year of coach ownership and attendance at Homecoming. We arrived several days early and were happy to spot one of our Spartan classmates as we walked the grounds, spotted another familiar name, soon discovered a third as they parked beside us, and eventually found five other couples from the class. This led to



the plan for a quick happy hour between classes and dinner for the 12 of us followed by seating together for the evening meal. It was great to catch up with everyone, find out where they had been, where they were going, and how they were enjoying the Entegra Coach Lifestyle.

Our group was not unique. All over the fairgrounds you find small groups gathering either because they planned it or just by chance. With over 200 coaches attending the chances are quite good you will meet someone you know and make a few new friends. For a short blurb about Homecoming see:

<https://www.rvbusiness.com/blog/entegra-owners-rally-draws-500-plus-to-fairgrounds.html>

## Destinations

### Tell Us About Your Favorite Destination

Share your favorite destination or travel stop with other members. Send a short blurb with the locations name, address, ease of access, size of sites, and photos if possible., especially of you and your coach at the location. Submit your information and photos to the Editor at:

[dana.sawyer350@gmail.com](mailto:dana.sawyer350@gmail.com)

## What's New in Coaches

### Entegra New Retail Parts Policy By Joyce Skinner Director, Customer Experience, Jayco Motorhome Group

It was announced at the Entegra Homecoming event that customers are now able to order parts directly from Entegra again. To order parts, please call 800-517-9137 and choose option 2 then option 1 for the parts department. Or, you can contact them via email at [parts@entegracoach.com](mailto:parts@entegracoach.com). However, because we are not a tax registrant in Canada, we are not able to sell parts to Canadian customers - I am so very sorry about that. Of course, selling parts met with lots of applause from those in attendance and we are very happy that we were able to start this program again for you.

## Entegra Service Highlights

### Great Service Stories or Tips

Share your service experience with other members. Send a short story with names, places, and a description of the task. Submit your information and photos to the Editor at:

[dana.sawyer350@gmail.com](mailto:dana.sawyer350@gmail.com)

### Annual Inspection Report (AIR)

**By Joyce Skinner Director, Customer Experience, Jayco Motorhome Group**

There seems to be some confusion still as to what is done here at the factory service center when you come for an AIR. Basically, this is a systems functionality check as well as a visual check. It IS NOT refurbishing your coach to "like new" condition. **See document at the end of this newsletter.**

If we find issues during this inspection, your service advisor will let you know. If it is a regular warrantable issue, we take care of it. If it is something that is considered routing maintenance, your service advisor will let you know that as well and you can choose whether you want us to perform the repair or choose to do it yourself.

If there are any questions regarding the AIR, please contact customer service at [service@entegracoach.com](mailto:service@entegracoach.com).

the sights, venues, and the opportunity to mingle with fellow owners during happy hours. Following Minot, a group is headed to the International Peace Garden in North Dakota. There, they will meet with other owners heading to Winnipeg Beach for a fantastic five-day event, our first Canadian Rally!

Do not forget about our September Summerfest Rally in Foxborough, Massachusetts. Our campground, Normandy Farms, is close to the Patriots' Stadium and a short drive to Boston or Cape Cod.

If your schedule is more open in the fall, we are hosting a return rally at the Amana Colonies in Iowa. This is a historic area and known for good food and great people. The village is quaint and filled with many unique boutiques. While it is filled, the Albuquerque Balloon Festival is becoming a regular fall event. It will again be offered next year so keep watching the events page on our website for sign-up in 2020.

Perhaps you are an early planner and will be visiting Florida, so listed below are save the dates for several upcoming rallies. Watch for announcement emails and check the website. Hope to see you down the road.

### SAVE THE DATES

- December 10-13 Jupiter Beach Florida
- January 14-19 Tampa Supershow in Florida
- January 17-25 Quartzsite, AZ
- February 28-3/1 Up,Up Away Florida (A hot air balloon event in Lakeland Florida)
- May 18-21 Entegra Homecoming

## Secretary

### Events

**By Medarda Bauer, Secretary**

Summer is heating up and if you are looking for something to do, ECOA has a rally for you. FMCA is hosting a rally in Minot North Dakota. We will have a gathering there and I am certain you would enjoy

## Treasurer

Treasurers Official Report -ANNUAL AUDIT: An annual audit of the chapter's financial books and records shall be undertaken and reported to the membership.

## Membership

Maintaining your membership in the Entegra Coach Owners association is simple and secure. Follow these steps:

- Go to [www.entegraowners.com](http://www.entegraowners.com)
- Select HOME
- Scroll down and select "RENEW MEMBERSHIP HERE"
- Log in using your email address and password
- Follow the instructions

### **ECOA Adapts for the Future By Raymond Wenig, ECOA VP**

Your club, through its elected executive Board of Directors has discussed, conceived, and voted for a set of changes of its by-laws to improve the club's sustainability and adaptability for the future. This is by creating two new positions for the Board of Directors and the creation of staggered officer terms.

One board position is to ensure continuity of good governance by making a board position for the outgoing President to have a seat at the Executive Board for one term to advise and assist the new board and its officers in understanding and appreciating past actions and activities. The second is to add a new Senior Vice President position to the next board to be able to build sufficient knowledge to be able to have a qualified candidate who has studied and reviewed as many aspects as practical on how your club operates and the issues it will face in future terms. This new position will be an understudy for the President, serve as a temporary fill-in as needed, and be a reviewer and evaluator of the operations of the club and its officer's plus being a strategizer for improving the operation of the club and the engagement of the membership.

The new positions and staggered terms will be voted on by the membership at the annual meeting and will provide a logical succession process for

learning and improving club actions and developing ready and qualified candidates to lead it into a successful future. This will make the ECOA like the structure adopted by the FMCA and the Diesel RV Club for the same reasons.

These changes will help the ECOA to be better able to deal with the numerous challenges that will be forthcoming both known and unknown. We know our membership is changing and different generations will want different services. The level of volunteers who will help with running a social association is slipping, time for volunteering is diminishing and members expect more relevant activities if they are to be engaged and participating. In addition, the RV technologies are changing rapidly with diesel being targeted for replacement by electro motive and the big rigs receiving more autonomous driving and safety programming.

Survival, succession, and growth of our club will depend on maintaining its relevance and actively recruiting members to help manage its affairs and produce it services such as knowledge sharing, training, rallies, outings, communications, etc. Our success so far and our ability to focus on the future and our positive relationships with our members may make us attractive for other clubs to emulate or affiliate with our activities.

I recommend your thoughtful consideration of these changes to your clubs' structure and to the candidates you elect to the board positions for the upcoming election cycle which is also being changed to staggered officer terms to assure continuity of board operations. The future is racing forward on all fronts. Our ability to meet it needs an organization that is flexible, resilient, and sustainable. These steps by your current elected board will support ECOA continuity in logical and coherent ways.

## Recommended Bylaw Change By ECOA Executive Board

This bylaw change is recommended by the ECOA Executive Board. It will be accompanied by the org chart and job descriptions.

Article IV; section 1

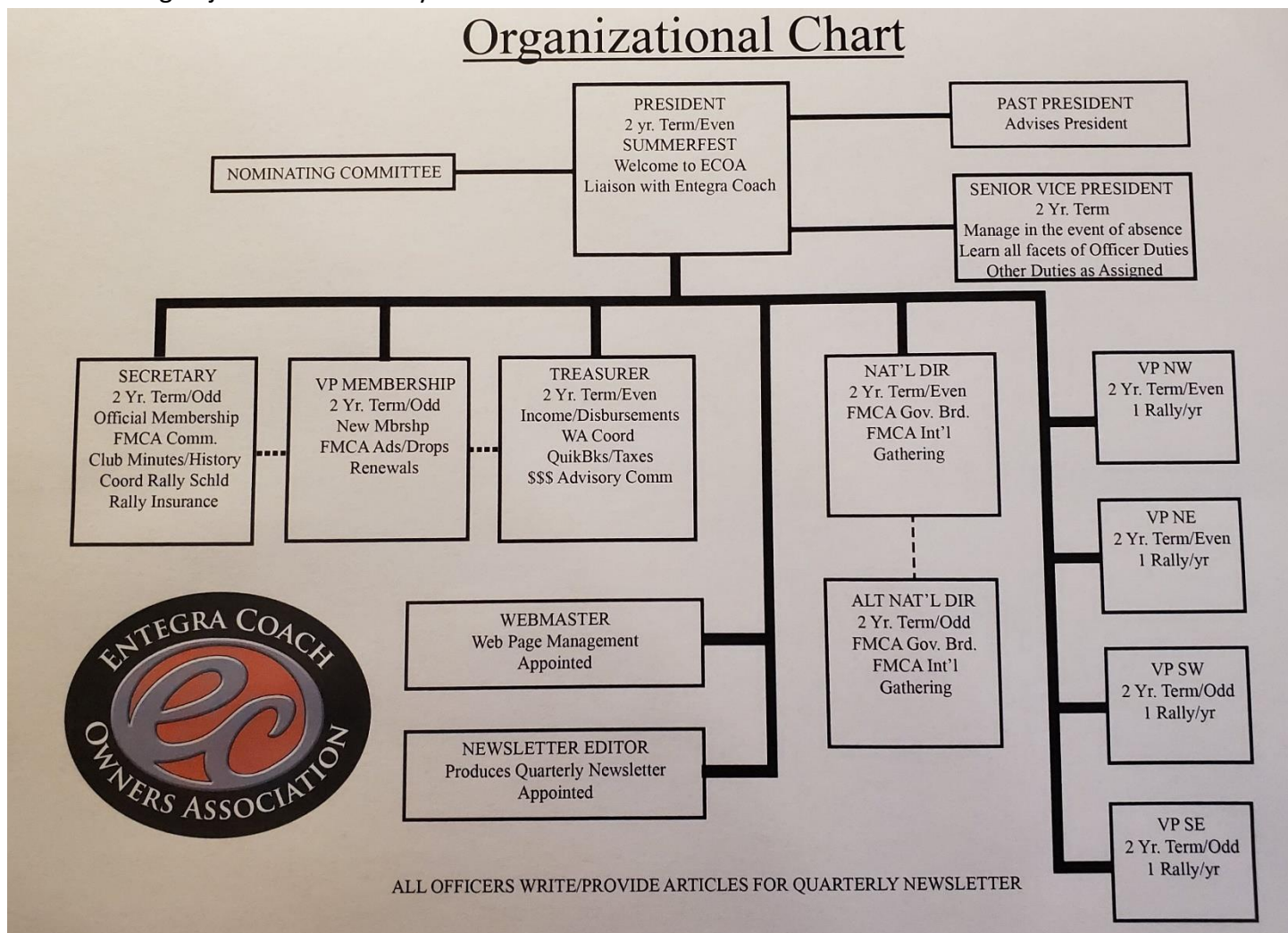
The duties of elected officers shall be as defined in the Member and Volunteer handbook, and is further described by the Entegra Coach Owners Association Organization Chart and Officer Job Descriptions found in the Appendix.

The ECOA Board of Directors met to develop a working "Organizational Chart" and job descriptions for each of the officers. As a volunteer organization it became apparent to the board that a streamlining of jobs was necessary. While each

area VP may not be filled 100% of the time at least efforts will be made to find an officer for each region. The office of senior vice president was also added to ensure continuity if the President is unable to perform his or her duties.

This amendment to article 4 section 1, and the accompanying organizational chart with job descriptions will be voted upon at Summerfest 2019 to be held at Normandy Farms this September. Once approved by the membership it will be added to our current bylaws section.

## Organizational Chart



## Job Descriptions By ECOA Executive Board

- PRESIDENT - Elected in Even Years
- Elected for 2 year term starting in 2020
- Responsible for SUMMERFEST Rally each year
- Update President's Articles for Web Page
- Welcomes New Members
- Communicates with Entegra Coach Inc.
- Quarterly Article for Newsletter
- Serves as Spokesperson for the ECOA
- Plans and Conducts Annual Meeting
  
- IMMEDIATE PAST PRESIDENT
- Advises President and offers assistance as needed
- Member of Executive Board
- Attends Annual Meeting
  
- SENIOR VICE PRESIDENT - Elected in Even Years
- Elected for 2 year term starting in 2020
- Serves in absence of the President
- Becomes familiar with Responsibilities and Duties of all club officers
- Reviews and Updates ECOA ByLaws
- Strategizes continuous growth and improvement within the constraints of the club's stated mission and purpose
- Plans/conducts one Rally per yer
- Quarterly Article for Newsletter
- Other Duties as assigned
- Attends Annual Meeting
  
- VP MEMBERSHIP - Elected in Odd Years
- 3 year term beginning in 2020 and 2 year term thereafter
- Serves on Executive Board
- Develop working knowledge of Wild Apricot Member Management Database Software
- Offers Welcome letters to potential new members
- Coordinates with Entegra Coach Owners Lists
- Coordinates FMCA Memberships
- Quarterly Article for Newsletter
- Attends Annual Meeting
  
- AREA VP's
- 2 are elected in Even years and 2 in Odd Years
- Serves on Executive Board
- Responsible for One Rally or Gathering per year
- Quarterly Article for Newsletter
- Attends Annual Meeting
  
- TREASURER
- 2 year term in Even years
- Serves on Executive Board
- Manage income and disbursements
- Coordinate Wild Apricot (WA)
- Conducts yearly Audit with two non-Executive Board Member volunteers
- Manage Treasurer's Advisory Committee
- Quarterly Article for Newsletter
- Attends Annual Meeting
  
- SECRETARY
- 2 year term elected Odd years
- Serves on Executive Board
- Manage FMCA Communications
- Keep/Take Club Minutes/History
- Coordinates Rally Scheduling
- Obtain FMCA Insurance Riders from FMCA for all rally events
- Certifies FMCA membership in coordination with Membership VP
- Quarterly Article for Newsletter
- Attends Annual Meeting
  
- NATIONAL DIRECTOR
- 2year term Even Year
- Serves on Executive Board
- Represents ECOA at Annual FMCA Governing Board Meeting
- Communicates with ECOA Board and Membership to discover the Club Position on Governing Board Action Items
- Votes the Club's Will at FMCA Governing Board
- Quarterly Article for Newsletter
- Attends Annual Meeting

## FMCA International Area

- ALTERNATE NATIONAL DIRECTOR
- 2 year term elected Odd Year
- Serves on Executive Board
- Serves in place of National Director if unable to attend
- Quarterly Article for Newsletter
- Attends Annual Meeting

## Links of Interest

- WEBMASTER-Appointed position
- Maintains Club Website
- Posts Rally Events and Registrations
- NEWSLETTER EDITOR-Appointed position
- Solicits articles for the Quarterly Newsletter
- Edits and assembles the Quarterly Newsletter
- NOMINATING COMMITTEE:
- Responsible for recruiting a slate of officers for the Entegra Coach Owners Association
- Comprised of a 5 member panel with leadership by 2 current officers
- Slate of Officers will be reported to ECOA Executive Board on or before Requested Date
- Contact current officers to determine their willingness to serve or move to another position as a candidate
- Contact members who have volunteered to serve

### LINKS OF INTEREST

- ECOA Web Page <http://www.entegraowners.com/>
- ECOA Apparel <https://ecoa.logosoftwear.com/>
- Entegra Coach <https://www.entegracoach.com/>
- Spartan Chassis <http://www.spartanmotors.com/rv-range/>
- FMCA <https://www.fmca.com/>
- IRV2 <http://www.irv2.com/forums/f278/>

### CONTACT INFORMATION

- Entegra (M-F, 8-5) 800-517-9137
- Entegra (after hours emergency) 574-361-0034
- Spartan (m-f, 8-5) 866-383-3695
- Spartan (after hours emergency) 800-543-4277



### Annual Inspection Report

Date:Coach Serial Number:

Odom:Entegra Model:

Year:Factory Technician :

\* =

Indicates Possible Non Warranty

V = Visual, F = Functional

(Batteries, Filters, Light Bulbs etc.)

A = Accept, R = Reject



Area	Item	V/F	Accept Criteria	Inspection Results	A/R
Appliances	L.P Check	F	Lock Out _____ In of H2O Col		
	Manometer	F	ST _____ @ _____ In of WC		
	(Certain Models only)		ST _____ @ _____ In of WC		
	Aqua Hot Electric	F	≥ 125 f @ 5 Min		
	Aqua Hot Gas	F	≥ 125 f @ 5 Min		
	Aqua Hot Zone 1&3	F	≥ 125 f @ 5 Min		
	Aqua hot Zone 2	F	≥ 78 f @ 5 Min		
	Aqua Hot Basement	F	≥ 125 f @ 5 Min		
	LP/CO2	F	Green Light Push "Test Button"		
	Smoke Detector *	F	Push "Test Button"		
	Fire Extinguisher *	V	Bottle Level / Green		
	Refrigerator - Cold	F	35 f +/- 4 deg		
	Refrigerator - Freezer	F	0 f +/- 4 deg		
	Microwave/Oven	F	Boil 8 Oz. H2O ≤ 2 Min - High		
	Range Elec	F	≥ 212 f @ 5 Min		
	Range Propane	F	≥ 212 f @ 5 Min		
Fresh Water System	Sink Faucets H/C Labeling	F	Visual / Functional		
	Water Filter *	V	Visual Condition		
	Water pump Filter *	V	Visual Condition		
	W/Pump & Switches	F	Check Switch Function		
	Low point Drains	V	Visual H2O Flow		
	Water Fill Valve	V	Visual H2O Flow		
	Water fill Hose/reel	V	Visual H2O Flow		
	Water tank leak test	F	Fill Tanks / No Leaks 10 Min		
	Water System test	F	60 PSI for 10 minutes		
	Headlamps - High Beam*	V/F	Functions as Designed		
	Headlamps - Low Beam*	V/F	Functions as Designed		
	Hazards - Front *	V/F	Functions as Designed		

Exterior Light, Torque Specs, and System	Front Turn Signals *	V/F	Functions as Designed		
	Rear Turn Signals *	V/F	Functions as Designed		
	Clearance Lights *	V/F	Functions as Designed		
	Tail Lights *	V/F	Functions as Designed		
	Rear Hazards *	V/F	Functions as Designed		
	Rear Brake Lights *	V/F	Functions as Designed		
	Back-up Lights *	V/F	Functions as Designed		
	Third Brake Light	V/F	Functions as Designed		
	Security Lights *	V/F	Functions as Designed		
	Porch Light *	V/F	Functions as Designed		
	Side Marker Lights *	V/F	Functions as Designed		
	Windshield Wiper Torque	V/F	Torque to 65lbs.		
	Awning Shake Sensor	F	Check Operation		
	License Plate Light *	V/F	Functions as Designed		
Power 110/12V	Auto Gen Start	F	Start in 30 Sec.		
	Generator Output	F	≥ 110 V		
	Gen.Remote Switch	F	Start in 30 Sec.		
	Gen. Slide Out Tray	V/F	Functions as designed		
	Gen. Fluid Level	V	At Full Mark		
	Inverter Operation	F	≥ 110 V		
	Transfer Switch	F	Functions as designed		
	Cord Reel	V/F	No Damage & Function		
Domestic Interior	Interior Lights *	V/F	Check operation		
	Slide out Seal Function	V/F	50% compression of bulb seal		
	Shades Day/Night	F	Check operation		
	Fans/Exhaust Vents	F	Check operation		
	Bedroom remote lock *	F	Check operation		
	Recepts 110/12V	F	Check polarity of each recepts		
	Toll Window	V/F	Visual & Function of operation		

	Emergency Exits	F	Functional check of operation		
	GFCI	F	Test each with reset		
	Remote Controls *	F	Check operation		
	SO remote function *	F	Check operation		
	In Dash Radio	F	Check operation		
	Exterior Radio	F	Check operation		
	I Pad ( if equipped)	F	Check operation		
	Touch Pad 2017+	F	Check operation		
Waste Water	Black/Grey Valves	V	Visual check to insure no leaks		
	Black Tank Rinse	V/F	Connect hose check H2O flow		
	Sink P-Traps/no leak	V	No leaks at P-traps		
Dash Area	Jacks/Leveling	F	Check operation		
	A/C Operation	F	Air Temp @ dash 20 deg below ambient		
	Heater Operation	F	Air Temp @ dash >85 deg		
	Dash Ext. f Gauge:	F	Check for display		
	Steering Wheel Cntrl.	F	Check operation		
	12V/USB Plugs	F	Check operation		
	Gen Start Switch	F	Check operation		
	Day Shade switches	F	Check operation		
	Horn/Airhorn	F	Check operation		
	Light Check	V/F	IP Lighting Function as Designed		
Entry Area	Entry Door	F	Check operation		
	Grab Handles (Entry & Cargo)	V/F	Secured, not loose		
	Dead Bolt/Lock	V	Check operation		
	Slide Step/power	F	Check operation		
	Keyless Entry	F	Check operation		
	Key Fob /Shatter *	F	Check operation		

Inspector Notes

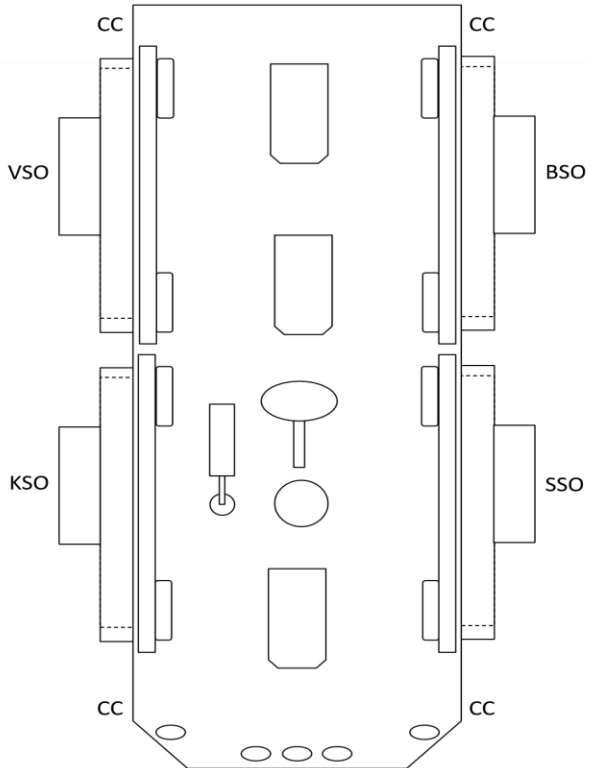


Unit #
Date:

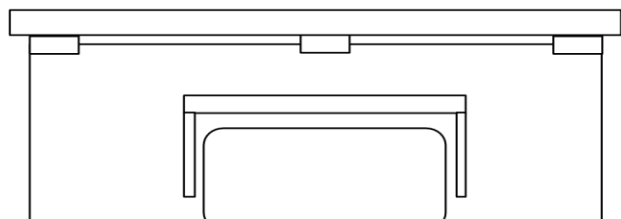
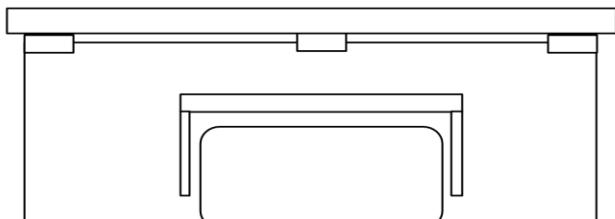
## Entegra Factory Service - Annual Inspection Record - Roof Inspection

### Roof/Awnings/Slide-Outs

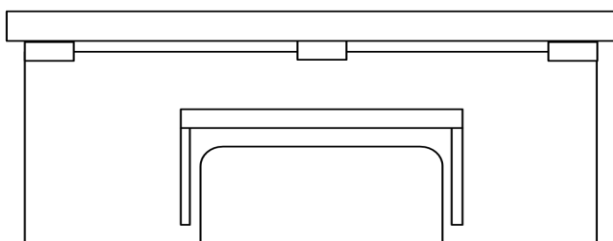
			Pass	Fail
Roof	A	A/C Units Secure		
	B	Antennae Secure		
	C	Vents; No Cracks		
	D	Skylight: No Cracks		
	E	Sirius Antenna; Clean		
Step	F	J-Box Connection Secure		
Slide	G	Main Awnings Aligned		
Seal	H	Dome Sat; Damage Free		
	I	Travel Sat; Damage Free		
	J	TV Antenna; Damage Free		
	K	Clearance Lights; Clean		
	L	Clearance Lights; No Dam.		
			Pass	Fail
	1	Self Level; No Gaps/Voids		
	2	No Cracks in Roof Seal		



			Pass	Fail				Pass	Fail
VSO	1	Gap Seal; No Gaps/Voids			KSO	1	Gap Seal; No Gaps/Voids		



			Pass	Fail				Pass	Fail
SSO	1	Gap Seal; No Gaps/Voids			BSO	1	Gap Seal; No Gaps/Voids		



Inspector Notes

